

## Population

	Current	%	2015	2014
<b>Total Population</b>	<b>121,452</b>	<b>100%</b>	<b>120,036</b>	
Under 5 years	9,109	7.5%	9,243	9,337
5 to 9 years	10,809	8.9%	10,923	10,519
10 to 14 years	10,445	8.6%	10,323	10,519
15 to 19 years	8,623	7.1%	8,523	8,392
20 to 24 years	6,316	5.2%	6,002	5,792
25 to 34 years	16,639	13.70%	17,405	17,256
35 to 44 years	20,525	16.90%	20,406	20,448
45 to 54 years	16,760	13.80%	16,085	15,483
55 to 59 years	6,801	5.6%	6,602	6,028
60 to 64 years	4,858	4.0%	5,042	5,201
65 to 74 years	6,801	5.60%	6,002	5,673
75 to 84 years	2,793	2.30%	2,641	2,600
85 years and over	972	0.8%	720	827
<b>Male Population</b>	<b>60,053</b>	<b>49.6%</b>	<b>59,632</b>	<b>58,704</b>
<b>Female Population</b>	<b>60,404</b>	<b>50.4%</b>	<b>60,404</b>	<b>59,490</b>
<b>Median Age</b>	<b>34.4</b>	<b>-</b>	<b>33.8</b>	<b>33.7</b>



Source: U.S. Census Bureau – American Fact Finder – [www.factfinder2.census.gov](http://www.factfinder2.census.gov)

2016 American Community Survey

2015 American Community Survey

2014 American Community Survey



### Educational Attainment

	Current	2015	2014
<b>Population 25 years and Over</b>	76,080		
<b>Bachelor's Degree or Higher</b>	34.3%	34.8%	31.9%
<b>High School Grad or Higher</b>	93.2%	93.7%	92.4%
<b>Less than 9th grade</b>	3.0%	2.6%	2.7%
<b>9th to 12th grade, no diploma</b>	3.8%	3.7%	4.9%
<b>High school grad (or GED)</b>	24.2%	24.6%	26.6%
<b>Some college, no degree</b>	25.5%	25.7%	26.6%
<b>Associate's degree</b>	9.1%	8.5%	7.2%
<b>Bachelor's degree</b>	21.8%	22.6%	21.3%
<b>Grad or professional degree</b>	12.5%	12.3%	10.6%

[Source: U.S. Census Bureau – American Fact Finder – www.factfinder2.census.gov](http://www.factfinder2.census.gov)

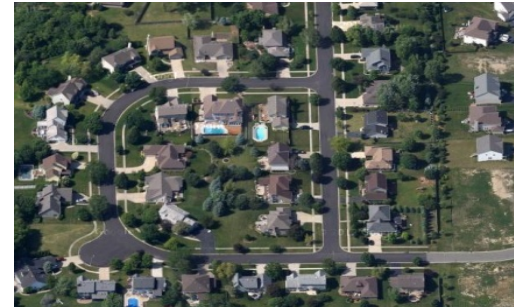
2016 American Community Survey

2015 American Community Survey

2014 American Community Survey

## Housing

	Current	2015	2014
<b>Total Housing Units</b>	<b>41,088</b>	<b>40,930</b>	<b>40,747</b>
Occupied housing units	39,275	38,516	38,453
Owner Occupied	32,152	31,778	31,961
Renter Occupied	7,123	6,738	6,492
Vacant housing units	1,813	2,414	2,294
<b>Homeowner Vacancy Rate</b>	0.7	1.0	1.0
<b>Rental Vacancy Rate</b>	1.4	2.4	2.6
<b>Median Owner Occupied Housing Value</b>	205,500	200,200	204,100
<b>Median Monthly Owner Costs</b>			
<b>Owners with a Mortgage</b>	1,957	1,965	2,003
<b>Owners without a Mortgage</b>	728	704	702
<b>Median Household Income</b>	\$85,736	\$84,385	\$83,844



[Source: U.S. Census Bureau – American Fact Finder – www.factfinder2.census.gov](http://www.factfinder2.census.gov)

2016 American Community Survey

2015 American Community Survey

2014 American Community Survey



### Employment

	Current	%	2015	2014
<b>Population 16+years</b>	89,307		87,815	85,951
<b>Labor Force</b>	66,123	-	65,176	64,369
Employed	62,605	94.7%	61,270	59,481
Unemployed	3,518	5.3%	3,906	4,831
<b>Travel Time to Work</b>	32.5 min	-	33.2 min	32.9 min

[Source: U.S. Census Bureau – American Fact Finder – www.factfinder2.census.gov](http://www.factfinder2.census.gov)

2016 American Community Survey

2015 American Community Survey

2014 American Community Survey

### Area Unemployment Trends

Location	Year		
	2016	2015	2014
Kendall County	5.3	6	7.5
DeKalb County	9.8	10.4	10.3
Kane County	5.9	7.6	8.9
Will County	6.8	7.8	8.9
LaSalle County	9.6	9.8	11.1
Grundy County	7.5	7.8	8.9
Illinois	8.2	9.1	10

[Source: U.S. Census Bureau – American Fact Finder – www.factfinder2.census.gov](http://www.factfinder2.census.gov)

2016 American Community Survey

2015 American Community Survey

2014 American Community Survey



## Employment by Industry

	Number Employed
<b>INDUSTRY</b>	<b>62,605</b>
Agriculture, Forestry, Fishing, Hunting, & Mining	689
Construction	3,431
Manufacturing	8,302
Wholesale Trade	2,362
Retail Trade	7,107
Transportation/Warehousing/Utilities	4,771
Information	976
Finance & Insurance, Real Estate & Rental & Leasing	5,025
Professional, Scientific & Tech. Services Administrative & Support & '	5,942
Educational Services, Health Care & Social Assistance	13,968
Arts, Entertainment & Recreation, Accommodation & Food Services	4,317
Other Services, except Public Admin.	3,370
Public Administration	2,345



Source: U.S. Census Bureau – American Fact Finder – [www.factfinder2.census.gov](http://www.factfinder2.census.gov)

2016 American Community Survey