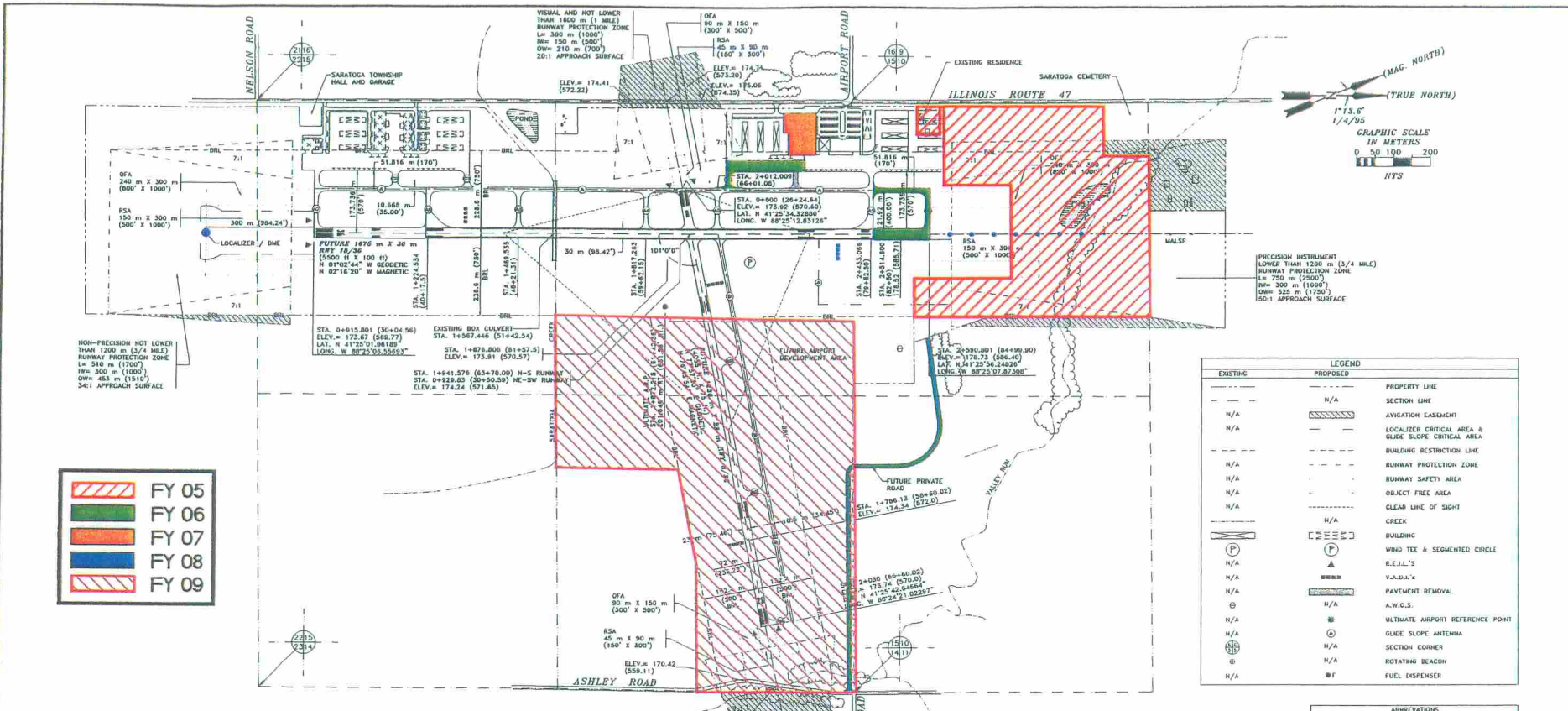


Drawing Name: G:\VPDATA\Morris Airport (MORRIS)\THS\2005-2009\Final\1117.dwg Last Modified: Dec 10, 2003 - 10:10am Plotted on: Dec 10, 2003 - 10:20am by kmh



	FY 05
	FY 06
	FY 07
	FY 08
	FY 09

EXISTING	PROPOSED	PROPERTY LINE
---	N/A	SECTION LINE
N/A		AVIGATION EASEMENT
N/A		LOCALIZER CRITICAL AREA & GLIDE SLOPE CRITICAL AREA
N/A	---	BUILDING RESTRICTION LINE
N/A	---	RUNWAY PROTECTION ZONE
N/A	---	RUNWAY SAFETY AREA
N/A	---	OBJECT FREE AREA
N/A	---	CLEAR LINE OF SIGHT
N/A	N/A	CREEK
		BUILDING
N/A		WIND TEE & SEGMENTED CIRCLE
N/A		E.I.L.'S
N/A		V.A.D.'S
N/A		PAVEMENT REMOVAL
N/A		A.W.O.S.
N/A		ULTIMATE AIRPORT REFERENCE POINT
N/A		GLIDE SLOPE ANTENNA
N/A		SECTION CORNER
N/A		ROTATING BEACON
N/A		FUEL DISPENSER

AIRPORT DATA	
COUNTY:	GRUNDY
TOWNSHIP:	SARATOGA
SURVEY, SECTIONS 10 & 15, TOWNSHIP 34 NORTH, RANGE 7 EAST	
AVERAGE DAILY HIGHEST TEMPERATURE:	30°C (86°F)
ITEM	
AIRPORT ELEVATION	176.73 (586.40)
AIRPORT REFERENCE POINT (ARP) COORDINATES	LAT. N 41°25'33" MAD B3 LONG. W 88°24'59"
TERMINAL NAVIGATIONAL AIDS	N.D.S., ILS RUNWAY 18, REL., VADI, BEACON

RUNWAY DATA		
ITEM	RUNWAY 18/36 ULTIMATE	RUNWAY 8/26 ULTIMATE
RUNWAY LENGTH x WIDTH	1673m x 30m (5500' x 100')	1230m x 23m (4035' x 75')
EFFECTIVE RWY. GRADIENT	0.050%	
PAVE. TYPE APPROACH SURFACE	50:1 (RWY 18) / 34:1 (RWY 36)	
PAVEMENT STRENGTH	2721 (6kg (60000 lbs.))	1088 (kg (24000 lbs.))
RUNWAY MARKING	PRECISION INSTRUMENT	VISUAL / NON-PRECISION
RUNWAY LIGHTING	T-III	
RUNWAY NAVIGATIONAL / VISUAL AIDS	NON-DIRECTIONAL BEACON, R.S. RUNWAY 18, MALSR, VADI, REL.	VADI, REL.
INSTRUMENT RUNWAY	PRECISION 1B	NONE
RUNWAY PROTECTION ZONE	RWY. 18: 300m x 750m + 825m (1000' x 2500' + 1750')	
AIRPLANE DESIGN GROUP	II	
AIRCRAFT APPROACH CATEGORY	C	B

CRITICAL AIRCRAFT DATA		
AIRPORT REFERENCE CODE (ARC)	C-II	B-II
APPROACH CATEGORY	I	I
APPROACH SPEED	121 KNOTS OR MORE BUT LESS THAN 141 KNOTS	91 KNOTS OR MORE BUT LESS THAN 121 KNOTS
TYPICAL AIRCRAFT	ROCKWELL SABRE 80	KING AIR 200
DESIGN GROUP	I	I
WINGSPAN	15m (49') UP TO BUT NOT INCLUDING 24m (79')	15m (49') UP TO BUT NOT INCLUDING 24m (79')
TYPICAL AIRCRAFT	ROCKWELL SABRE 80	KING AIR 200
RUNWAY DESIGN	2721 kg (60000 lbs.)	1088 kg (24000 lbs.)
TYPICAL AIRCRAFT	ROCKWELL SABRE 80	KING AIR 200
TAIL HEIGHT	7.6 m (24'8")	4.6 m (15')
AIRCRAFT	DASSUALT FAC-800	KING AIR 200

BENCHMARK DATA		
DESCRIPTION	ELEVATION METRIC	ELEVATION ENGLISH
S.E. CORNER OF CONCRETE BASE FOR OLD WIND SOCK AT OFFICE BLDG. CHISELED TO "ON N END OF WEST CONCRETE APRON OF RWY CULVERT BRASS PLUG IN WEST WALL OF GRACE LUTHER CHURCH (E.E. SPIKE IN POWER POLE WEST OF ASHLEY & WHITMAN ROAD)	179.558	(589.10)
	172.005	(564.32)
	179.763	(589.84)
	172.194	(564.94)

NOTE: AIRPORT PROPERTY IS ZONED AGRICULTURE, 1969

NOTE: THIS AIRPORT LAYOUT PLAN IS BASED ON CRITERIA CONTAINED IN THE F.A.A. ADVISORY CIRCULAR AIRPORT DESIGN, 150/5300-13, CHAPTER 4.

ABBREVIATIONS	
REL	RUNWAY END IDENTIFIER LIGHT
VADI	VISUAL APPROACH DECEIT INDICATOR
BR	BUILDING RESTRICTION LINE
RFPZ	RUNWAY PROTECTION ZONE
RSA	RUNWAY SAFETY AREA
MALSR	MEDIUM INTENSITY APPROACH LIGHTING SYSTEM WITH RUNWAY ALIGNMENT INDICATOR LIGHTS
NDB	NON-DIRECTIONAL BEACON
AWOS	AUTOMATED WEATHER OBSERVING SYSTEM
OFA	OBJECT FREE AREA
MRL	MEDIUM INTENSITY RUNWAY LIGHTING
DME	DISTANCE MEASURING EQUIPMENT

### FUTURE AIRPORT LAYOUT PLAN

**chamlin & associates, inc.**  
consulting engineers & land surveyors  
peru, ill. morris, ill.

REVISIONS	DATE	BY: kmh	CAO/DWG: 24535
1	8/27/2011	S.L.S.	DATE: 10-02
	CHECKED BY: kmh		
	SCALE: N.T.S.		SHEET 1
	FILE NO.: THS/A001P		OF 1

